

Purchasing Department
Madison County Board of Supervisors
146 West Center Street
Canton, Mississippi 39046

601-855-5503
hardy@madison-co.com

4 November 2016

District 1 Supervisor Sheila Jones
District 2 Supervisor Trey Baxter
District 3 Supervisor Gerald Steen
District 4 Supervisor David Bishop
District 5 Supervisor Paul Griffin

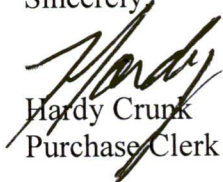
Subject: Authority to purchase two E-One Fire Trucks on State Contract

Dear Board Members:

Fire Coordinator Tom Lariviere is requesting to purchase two E-One fire trucks and related equipment from Sunbelt Fire on state contract at a total price of \$555,463. If ordered now, the fire trucks will delivered in late summer 2017. Sufficient fire funds will be available at that time to pay for the trucks.

Chief Lariviere will be at the November 7 board meeting to answer any questions that you may have concerning the fire trucks.

Sincerely,


Hardy Crunk
Purchase Clerk

Attachments:
Quote from Sunbelt
State Contract Documents



STATE OF MISSISSIPPI

VENDOR INFORMATION

Vendor Number : 3102026039

Vendor :

E-ONE, INC.
1601 SW 37TH AVENUE
OCALA FL 34474

Contact Name : Jay Johnson
Tel Number : (352) 861-3501
Fax Number :
Email : jjohnson@e-one.com

CONTRACT INFORMATION

Contract Number : 8200027989
Agency Contract Identifier : 1130-17-C-SWCT-00059-V002
Contract Type : Statewide Contract
Contract Description : N/A
Contract Valid Dates : 10/06/2016 - 09/22/2019
Total Value : N/A
Distributors : Yes
Delivery Days : 0

SHIPPING ADDRESS

BUYER INFORMATION

Contact Person : William Beard
Telephone : (601) 359-5171
Fax :
E-mail : BILLY.BEARD@DFA.MS.GOV

Notice to Vendor :

FIRE TRUCKS- E-One, Inc.

Item	Qty	Unit	Price Per Unit	Description	Delivery / Required Date
		Retention	Product Number/ Supplier Product	Discount	Amount
# 1	N/A	EA	\$ 0.00	Fire Trucks	-
		0.00 %		0.00	N/A

Distributor : SUNBELT FIRE APPARATUS INC

Distributors :

ID: 3100017225
SUNBELT FIRE APPARATUS INC
8050 MCGOWIN DR
FAIRHOPE AL 36532
Telephone :
Fax :

Contract 8200027989 with E-One, Inc. for Fire Trucks and Fire Apparatus

State of Mississippi
Department of Finance and Administration
Office of Purchasing, Travel & Fleet Management



**Contract #8200027989 with E-One, Inc. for Fire
Trucks and Fire Apparatus**

**The State of Mississippi in conjunction with
NASPO ValuePoint**

Under the Authority of
State of Mississippi, Section 31-7-1, et seq., Mississippi Code of 1972, Annotated

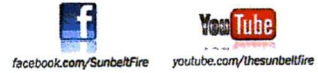
Contract 8200027989 with E-One, Inc. for Fire Trucks and Fire Apparatus

APPENDIX D AWARD & DISCOUNT SHEET

E-One, Inc. has been awarded a contract for the following categories of Fire Trucks with a discount of 0% off retail price. This price also applies to all options available for each category of Fire Truck.

75' (+/- 5 Feet) Rear Mounted Aerial Apparatus, 4 Door #77432	\$ 656,786.00
100' (+/- 5 Feet) Rear Mounted Aerial Apparatus, 4 Door #77431	\$ 873,012.00
125' (+/- 5 Feet) Rear Mounted Aerial Apparatus, 4 Door #77705	\$ 913,535.00
Medium Duty Rescue Apparatus, 2 Door #77433	\$ 204,718.00
Medium Duty Rescue Apparatus, 4 Door #77434	\$ 217,265.00
Min. 2000 Gallon Water Tender, 2 Door #77426	\$ 222,645.00
Commercial Pumper 2 Door #77427	\$ 239,175.00
Commercial Pumper 4 Door #77429	\$ 254,143.00

These are prices for Base Model trucks.



8050 McGowin Drive • Fairhope, AL 36532 • Office: 800.642.8484 • Fax: 251.928.9933 • www.sunbeltfire.com

November 1, 2016

This proposal has been prepared for: Madison County Fire Services

We propose to construct and sell the following in strict accordance with the attached equipment list and truck configuration from Sunbelt Fire, Inc.:

One (1) E-ONE Commercial Class A Pumper, Per Quote 79936	First Unit	\$ 236,317.00
	Additional Units	\$ 232,490.00
Pricing for additional equipment per truck		\$ 19,343.00
(5) SCBA's with 30 minute cylinders per truck		\$ 19,705.00
(5) Spare 30 minute cylinders per truck		\$ 4,280.00
Totals:		
One (1) E-ONE Commercial Class A Pumper, Per Quote 79936	First Unit	\$ 279,645.00
	Additional Units	\$ 275,818.00
		\$555,463

The price quoted includes delivery and instruction & familiarization by a factory trained technician. Pricing is valid for (30) days. The above pricing is valid for contracts issued on the Mississippi State Contract.

State Contract No.: 8200027989

Delivery is quoted at approximately 150 calendar days after receipt of chassis. Delivery is quoted in good faith and is subject to materials & supplier shortages, labor disputes, acts of God, and other unforeseen circumstances, as well as E-ONE backlog at time of order.

Payment is expected in full upon delivery and acceptance. Statement of Origin and Bill of Sale constitute a receipt of payment in full and will be presented at time of receipt of payment.

The manufacturer reserves the right to make model and engineering changes where deemed necessary for improvement in design, or safety of users, without prior notice to the customer. Units will be built according to all DOT, FMVSS, and NFPA standards unless otherwise noted or requested.

We appreciate the opportunity to provide you with information. This proposal is our written documentation of agreement of terms. Please contact Sunbelt Fire, Inc. with any questions or concerns.

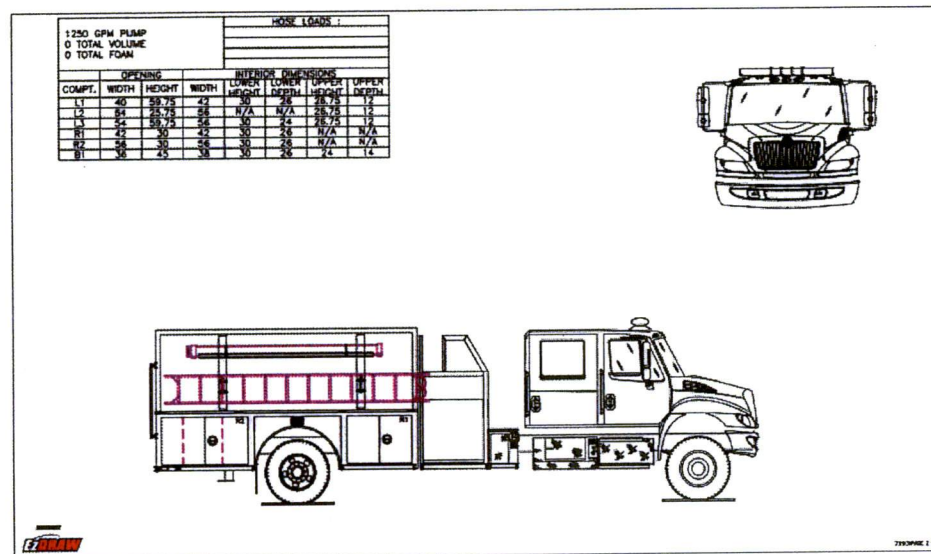
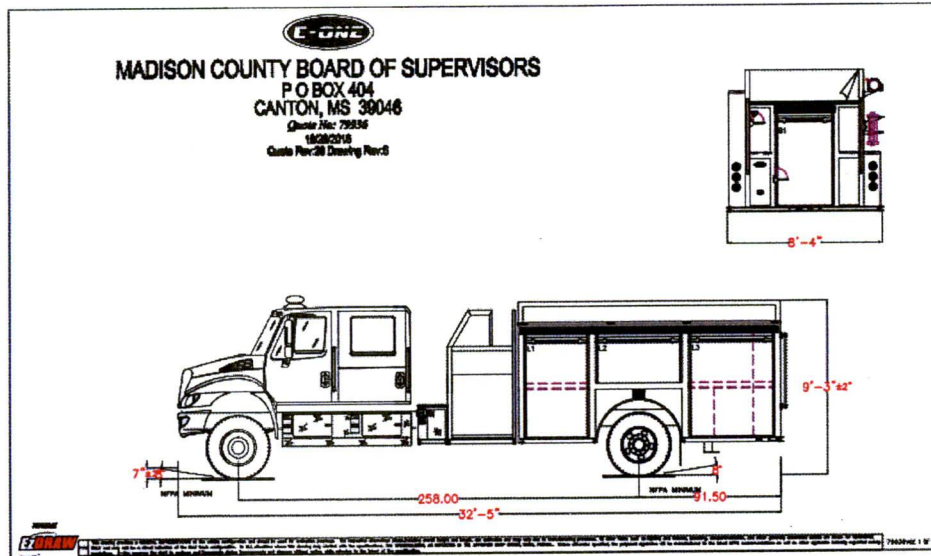
Respectfully submitted,

Curtis Gho (via email)

Territory Manager
Sunbelt Fire, Inc.

Madison Co Pumper Dwg 110116.pdf

Open with LumIn PDF



QUOTATION

Exp. Date: 11/13/2016
 Quote No: 10959-0001
 11/01/2016

PART NO	DESCRIPTION	QTY
	== ===== EQUIPMENT LIST FOR TRUCKS ===== - 0.000 ==	1
01-03-5200	Adapter, Red Head, #35, 2.5" DFM, Swl, LW	2
01-03-8200	Adapter, Red Head, #36, 2.5"DM, LW	2
03-07-1300	Axe, Leatherhead 6# Flat Head Yellow	1
03-07-1800	Axe, Leatherhead 6# Pick Head Yellow	1
03-10-1100	Axe Mounting Bracket, PAC #1011/1004, Flat Head	1
03-10-1200	Axe Mounting Bracket, PAC #1012/1004, Pick Head	1
09-01-1500	Tool Mnt, PAC 1004, Handlelok, Clamp, Adj .125"-1.75"	2
09-30-3100	Nozzle Mounting, South Park, Tri-Loc, 1.5"	1
09-30-3200	Nozzle Mounting, South Park, Tri-Loc, 2.5"	1
17-10-1100	Holligan Tool, Zico #SQB-360-C. Quik-bar 36"	1
23-10-1100	Elbow, South Park, 2.5" 30 deg, Chromed Brass, RL Female to Male	4
24-01-0100	Handlight, Streamlight 44451 Fire Vulcan LED Litebox with Truck Charger	1
25-02-1300	Extinguisher, Dry Chem, Amerex A411, 20ABC, w/810 Bkt	1
33-01-1500	Hose, Booster, 800#, 1" x (1)100'	2
35-05-1300	Hose, North American, Poly Tuff 800, 1.75"x50', White, DJ, 1.5" cplgs	12
35-05-1500	Hose, North American, Poly Tuff 800, 2.5"x50', White, DJ	4
35-05-1800	Hose, North American, Poly Tuff 800, 3"x50', White, DJ, 2.5" cplgs	16
47-01-1400	Ladder, Roof, Alco-Lite, PRL-14, 14' Alum	1
47-01-6500	Ladder, Extension, Alco-Lite, PEL-24, 24' Alum, 2 Section	1
47-03-1500	Ladder, Attic, Alco-Lite, FL-10, 10' Alum, Folding	1
47-10-4300	Ladder Mounting, Folding Attic	1
60-01-5200	Nozzle, TFT, DQS40P, 1", QuadraFog, Grip Selectable Gal	1
60-05-1800	Nozzle, TFT, FQS125PS, 1.5", QuadraFog, Grip, Selectable Gal	2
60-10-5900	Nozzle, TFT, JTS250PS, 2.5", ThunderFog, Grip, Selectable Ga	1
63-01-5200	Pike Pole, FlameFighter PP06, 6', Fiberglass	1
63-01-5600	Pike Pole, FlameFighter PP10, 10', Fiberglass	1
63-10-2100	Pike Pole Mounting, Clip Mnt (1)	4
71-15-1200	SCBA Bracket, Zico QLM-U Quic-Loc, Cab Mount	5
77-20-1300	Spanner Set, Red Head, 148-3, Spanner/Hydrant	1
85-01-1100	Intake vlv, w/30 S dtnt el, TFT AB1SP-NX, 4"Stz rgd x 6"F NH S LH	1
87-01-1200	Wheel Chock, Zico AC-32, w/Horizontal Bkt (2)	1
99-99-0001	SCBA, MSA M7XT w/30Min Carbon Bottle	5
99-99-0002	Cylinder, MSA 30 Min Spare Carbon Bottle	5



**Fire Apparatus Quotation for:
MADISON COUNTY BOARD OF SUPERVISORS**



Quotation Number: 79936 Rev: 33
 Unit Description: ESPA-COMM
 Quote Description: Pumper, Aluminum, Commercial

Salesperson: RSTUARDI

Salescode	Extended Description	Qty	
TESTING COMPLIANCE STANDARD			
1001-0065	The E-ONE supplied components of the vehicle shall meet the requirements of NFPA 1901, 2016 edition.	1	
3090-0002	OAH. Unit has no overall height restrictions.	1	
3090-0004	OAL. Unit has no overall length restrictions.	1	
3090-0007	Hosebed hoseload allowance on the apparatus shall be 1200 lbs.	1	
3340-1137-12B	Equipment allowance on the apparatus shall be 2000 lbs. This allowance is in addition to the weight of the hoses and ground ladders listed in the shop order as applicable.	1	
CHASSIS MODEL			
1005-0829	International 4400 (4) door, 258" WB & 47" frame cut, front tow hooks, 14K & 30K axles, ABS brakes, radiator cooling sized for current emissions requirements, 50 gal. fuel tank, EVS3000 transmission, (3) 1950CCA batteries, 320 amp alternator, ember separator, SCR with 5 gal. DEF tank and AC	1	
CHASSIS PREP			
1020-0011	Comm Chas Prep E-1 Supp-Non FL. International	1	
WHEEL OPTIONS			
1050-0036	International chassis rims painted job color. Tradition.	1	
TIRE OPTIONS			
1060-0117	RWC AirGuard LED tire pressure monitoring valve stem caps (6) for single rear axle applications.	1	
AIR SYSTEM OPTIONS			
1110-0010-277	Air inlet. To charge brake system. Commercial chassis only. Location: driver's door step area.	1	

Salescode	Extended Description	Qty	
AIR SYSTEM OPTIONS			
1110-0062	Dual Hadley Hood Mounted Air Horns with Driver and Officer Foot Switches to be Supplied and Installed by International.	1	
ENGINES & TRANSMISSIONS			
1200-0137	Electronic speed limiting set to 60 MPH.	1	
1200-0263	Exhaust Brake for use with International chassis.	1	
1200-0284	International N9 engine, SCR 315 HP.	1	
CHASSIS OPTIONS			
1680-0011	Tow eyes rear below body, painted.	1	
1680-0078	Tow hooks front OEM. Not available with extended E-ONE installed front bumper. Tow hooks are OEM supplied with chassis.	1	
1680-0235-R01	The batteries to be located under left hand side of cab.	1	
1680-0323	Diamond plate trim package for a (4) door International. Includes a full length driver side and officer side trim that will utilize pieces already supplied by the OEM. For International cabs with SCR and DEF.	1	
CAB BADGE PACKAGE			
1610-0000	Cab and body to have applicable E-ONE logos.	1	
CAB DOOR OPTIONS			
1550-0059-000-G6	Reflective Red/Lemon Yellow printed striping positioned in the "A" formation located on the cab door panels.	1	
MISC EXTERIOR CAB OPTIONS			
1675-0007	Diesel fuel only label.	1	
1675-0157	The exterior lower rear of the commercial cab to have a diamond plate overlay. For use with a top mount application.	1	
SEATS			
1685-0032	Seating capacity tag of five occupants.	1	
MISC INTERIOR CAB OPTIONS			
1685-0372	Map pocket rear cab console aluminum plate to match console finish.	1	
1685-0450	Center control console painted black Zolatone. Locate in cab between driver and officer. Includes area for NFPA siren, electrical, and in-cab controls (as applicable) switching.	1	
CAB ELECTRICAL OPTIONS			

Salescode	Extended Description	Qty	
CAB ELECTRICAL OPTIONS			
1750-0024-277-04	Auto-Eject receptacle inlet 20 amp located driver's door step area with a Yellow cover.	1	
1750-0343	Battery charger E-ONE LPC 20. 120 volt inlet, 20 amp output.	1	
BODY SPEC			
3090-0031-1EJ	The cab to body gap is extended approx 4". (Note: this option is to support internal programming functions)	1	
BODY COMPT LEFT SIDE			
3100-0113	Driver side body with full height 42" wide forward and 56" wide rearward enhanced extended compartmentation. Includes (1) 56" wide compartment over the wheel well.	1	
BODY COMPT RIGHT SIDE			
3120-0014	Officer half side body with 42" wide forward and 56" wide rearward enhanced extended compartmentation. Includes adjustable ladder tracks.	1	
BODY COMPT REAR			
3110-0005	Full Height Rear Compartment. Includes smooth plate panels.	1	
3340-0083	Bolt-on diamond plate tailboard (full width of rear compartment). Includes the enhanced extended side compartment frame work with diamond plate compartment tops, (1) officer side lower area folding step. Driver side includes (1) upper hosebed mounted handrail (as applicable) and handrails- (2) vertical on trailing edge of body and horizontal mounted handrail(s) below hosebed.	1	
DOORS			
3300-0017-004	Door roll up short (up to 45") with satin finish ROM. Location(s): L2.	1	
3300-0019-003	Door roll up tall (greater than 45") with satin finish ROM. Location(s): L1.	1	
3300-0019-005	Door roll up tall (greater than 45") with satin finish ROM. Location(s): L3.	1	
3300-0019-027	Door roll up tall (greater than 45") with satin finish ROM. Location(s): B1.	1	
3300-0164-015	Door double vertical hinged w/rotary latches - painted . Location(s): R1	1	
3300-0164-016	Door double vertical hinged w/rotary latches - painted . Location(s): R2	1	
SHELVES			
3370-0025-099	Shelf, permanent shelf. Locate in L1 at offset (above extrusion if applicable).	1	
3370-0025-100	Shelf, permanent shelf. Locate in L3 at offset (above extrusion if applicable).	1	
3370-0143	Fixed shelf B1 compartment. Locate just above the booster reel.	1	

Salescode	Extended Description	Qty	
COVERS			
3305-0007-000-02	Vinyl Red hose bed cover with attached rear flap(s).	1	
3305-0008-000-02	Vinyl Red crosslay cover with attached side flaps.	1	
PUMP MODULE			
3130-0167	Pump module to be 76" wide (side to side). Includes upper, lower, crosswalk, speedlay and tranverse module(s) if applicable.	1	
3130-0524	Top mount pump module with 20" walkway. Extruded aluminum with runningboards and formed side access steps.	1	
3130-0532	Pump panel opening is 39" wide. Pumper / tanker only.	1	
3130-0552	Pump module height is 85". Pumper / tanker only.	1	
PUMP PANELS			
3134-0015	Stainless steel TM control panel, driver and officer side pump panels.	1	
3134-0144	Driver and officer side pump panels to be vertical hinged on forward extrusion. Panels to be (2) pieces with upper panel secured in the closed position with push button latches. Upper panels to be held open with gas shock.	1	
MISC PUMP PANEL OPTIONS			
4460-0003	Pump panel tags color coded per NFPA compliance.	1	
4460-0087	Hose reel blow-out, with Innovative Controls 1/4" valve w/1/4 turn handle.	1	
PUMP MODULE OPTIONS			
3136-0058	E-ONE logo mounted one each side on pump module/preconnect panels. Logos to be sized as applicable to available space on panels.	1	
3136-0140	Crosslay double 7.5" wide each with extra depth to hold up to 400' of 2.0" DJ hose (each).	1	
WATER TANK			
4010-0099	Fill tower(s) to be located offset to officer side of water tank.	1	
4010-0180	1280 Gallon "T" Water Tank. UPF Poly III color fill towers. Note: Any foam cell(s) and/or storage options through the tank will reduce the overall water capacity.	1	
TANK PLUMBING			
4450-0010	2" tank fill Akron manual valve.	1	
4450-0119	3" tank to pump Akron manual valve w/4" tank connection.	1	
LADDER STORAGE / RACKS			
3365-0031	Hard Suction Storage Rack. Officer side in adjustable track above ladders (if	2	

Salescode	Extended Description	Qty	
LADDER STORAGE / RACKS			
	applicable). Includes spring hold downs and scuff plates.		
3365-0049	Brand of ladders capable of being carried on unit to be Alco-Lite.	1	
3365-0087-C57	The length of ladders capable of being stored shall be the following: 24' 2-section and 14' roof ladder.	1	
HANDRAILS / STEPS			
3330-0277	Innovative Controls dual lighted LED folding steps rear NFPA. Includes folding steps on driver side rear of the body. (staggered stepped as applicable with tailboard depth) for NFPA hosebed access and handrail mounted on driver side upper hosebed side (as applicable).	1	
3330-0279-060	Innovative Controls dual lighted LED folding step. Location: officer side front compartment face. Each location requires a minimum of (1) handrail per NFPA.	1	
3330-0279-062	Innovative Controls dual lighted LED folding step. Location: driver side front compartment face. Each location requires a minimum of (1) handrail per NFPA.	4	
MISC BODY OPTIONS			
3340-0004	Hosebed above the booster tank. Includes forward hosebed and tower(s) cover plate work (as applicable). Hosebed adjustable divider extrusion rearward of the furthest tower is to run full width of the hosebed (as is practical with other hosebed mounted equipment).	1	
3340-0035	Divider Long. To run full length of hose bed (front to rear).	2	
3340-0075	Body mainframe and hosebed side assemblies for a 90" high body.	1	
3340-0093	Mud flaps, rear, black with E-ONE logo.	1	
3340-0110	The rear of each hose bed divider to have a hand hold cut-out(s).	1	
3340-0429	Main (structural) body rubrail package. Includes white scotchlite inserts.	1	
3340-0680	Body mainframe layout line to be 23". Includes body and all applicable modules.	1	
3340-0864	Diamond plate single axle wheel well. Includes bolt-on composite wheel well liners and sanded aluminum trim fenderettes.	1	
SCBA BOTTLE STORAGE			
3320-0100	Strap(s), loop style to retain SCBA bottle(s). Locate one per bottle in each exterior storage compartment.	1	
3320-0185-495	Fire Shopp brand (1) SCBA bottle storage with hinged door and push button latch. Door shall have a brushed stainless steel finish. Door shall NOT cover the recessed fuel fill if located adjacent to the SCBA storage. Location: driver side rear wheel well offset forward	1	
3320-0185-497	Fire Shopp brand (1) SCBA bottle storage with hinged door and push button latch. Door shall have a brushed stainless steel finish. Door shall NOT cover the	1	

Salescode	Extended Description	Qty	
SCBA BOTTLE STORAGE			
	recessed fuel fill if located adjacent to the SCBA storage. Location:driver side rear wheel well offset rearward		
3320-0185-498	Fire Shopp brand (1) SCBA bottle storage with hinged door and push button latch. Door shall have a brushed stainless steel finish. Door shall NOT cover the recessed fuel fill if located adjacent to the SCBA storage. Location:officer side rear wheel well offset forward	1	
3320-0185-500	Fire Shopp brand (1) SCBA bottle storage with hinged door and push button latch. Door shall have a brushed stainless steel finish. Door shall NOT cover the recessed fuel fill if located adjacent to the SCBA storage. Location:officer side rear wheel well offset rearward	1	
PUMPS			
4005-0030	Rating 1250 GPM	1	
4005-0195	Hale QFLO 750-1250 GPM pump, single stage. Requires primer option.	1	
PUMP CERTIFICATION			
4475-0000	Pump certification 750-2250 GPM	1	
PUMP OPTIONS			
4015-0053-198	Steamers to be Flush + 1". Location: driver's side.	1	
4015-0053-199	Steamers to be Flush + 1". Location: officer's side.	1	
4015-0098	Manual operated master pump drain. The master drain shall be clearly marked and placed in accessible location on pump panel.	1	
4015-0210	Pump cooler with Innovative Control 1/4 turn valve with "T" handle and label.	1	
4015-0238	Hale electric primer (oil-less).	1	
INTAKES			
4440-0004-202	2.5" side suction top mount control handle Akron manual valve. Location: driver side pump panel.	1	
INTAKE OPTIONS			
4445-0048	Intake pressure relief valve, Task Force Tips.	1	
DISCHARGES AND PRECONNECTS			
4415-0012-654	1.5" Crossslay with Akron manual valve. Location: crossslay 1 & 2.	2	
4415-0014-581	2.5" Left Pump Panel Discharge Akron Manual Valve. Location: left side discharge 1.	1	
4415-0014-582	2.5" Left Pump Panel Discharge Akron Manual Valve. Location: left side	1	

Salescode	Extended Description	Qty	
DISCHARGES AND PRECONNECTS			
	discharge 2.		
4415-0016-583	2.5" Right Pump Panel Discharge Akron Manual Valve. Location: right side discharge 1.	1	
4415-0022-350	2.5" Left Rear Discharge Akron Manual Valve. Location: left rear discharge.	1	
4415-0041	3" Deck Gun Discharge, Akron manual valve.	1	
4417-0106-L65	Deck gun piping to be positioned centered in deck gun channel.	1	
DISCHARGE OPTIONS			
4417-0177	Innovative Controls 3/4" bleeder/drain valve include 1/4 turn T-handle.	7	
4417-0182	TM Valve controls to be Innovative Controls T-handles with grip activated lock.	10	
4417-0186	Innovative Controls discharge and intake bezels with color code and verbiage for top mount pump panel.	1	
BOOSTER REEL			
4405-0093	Booster Reel. Reel to have capacity of 200' of 1" (not included). Includes rewind switch mounted on the exterior of compartment (rear body) on the officer's side. Locate reel in the rear body compartment.	1	
PRESSURE GOVERNORS			
4465-0011	Class 1 TPG pressure governor. Includes, water, oil, volt and tachometer.	1	
GAUGES			
4435-0083	Innovative Controls 10 LED SL series water tank level gauge. On pump panel.	1	
4435-0246	2.5" Innovative Controls stainless steel case pressure gauge (0-400) with color code bezel.	7	
4435-0247	4" Innovative Controls stainless steel case master pressure gauges with bezel. Intake 30-0-400, and discharge 0-400.	1	
ELECTRICAL SYSTEMS			
5010-0014-E12	Vehicle data recorder for commercial cab - 2009 / 2016 NFPA compliant. Includes occupant detection with display. Display location: outboard on driver's side overhead console.	1	
5010-0036	V-MUX Electrical system for pumper / tanker / rescue.	1	
5010-0059-339	VFD Text display for V-MUX electrical system. Location: center of dash.	1	
LIGHT BARS			
5300-0021	Light bar Federal Signal JetSolaris 60" LED. Red Solaris reflectors with clear domes. NFPA compliant. Does not require 2 addl side facing bars. Location:	1	

Salescode	Extended Description	Qty	
LIGHT BARS			
	Centered on the front cab roof.		
WARNING LIGHT PACKAGES			
5550-0067	Flash rate for Federal QuadraFlare LED lower level warning lights to be set at pattern 4, (75 QFPM).	1	
5550-0193-535	Federal Signal QuadraFlare LED lower level warning light package. Includes (6) QL64XF-R LED light heads with bezels and (4) IMPAXX LED model IPX302-4 light heads. Locate side facing lights: at forward most position, centered in rear wheel well, and side facing at rear of body in rubrail if equipped.	1	
WARNING LIGHTS			
5600-0105-170	Hazard (door ajar) light 2" LED. Location: center overhead.	1	
5600-0394-479-06	Federal LED beacon. Model LP800 (PR) Red. Location: rear upper body on aerial style brackets.	1	
SIRENS			
5500-0009	Federal PA300 electronic siren recessed mounted.	1	
5500-0024-B13	The electronic siren control is to be located on the center console.	1	
SPEAKERS			
5510-0028	Speaker Federal Dynamax ES100. Located officer's side behind tow hook. Navistar 4400 chassis only.	1	
DOT LIGHTING			
5150-0017	License plate light LED with chrome housing located at the rear of the body.	1	
5150-0112	Marker light package .75" Dia LED TecNiq. Commercial pumper and tanker bodies.	1	
5150-0170	Optronics 4" GloLight LED taillights. Includes red LED stop/tail, amber turn and clear back-up.	1	
LIGHTS - COMPARTMENT, STEP & GROUND			
5380-0276	Compartment light package TecNiq T440 4" LED for small bodies.	1	
5380-0279	Ground light package TecNiq T440 4" LED - small.	1	
5380-0281	Light recessed step TecNiq T440 4" LED. Locate one each side of top mount walkway.	1	
LIGHTS - DECK AND SCENE			
5390-0215-395	Deck Lights - Optronics Model TLL44 (PR). Location: rear body/beavertail area on the trailing edge up high.	1	

Salescode	Extended Description	Qty	
LIGHTS - DECK AND SCENE			
5390-0216	Hose bed light Optronics LED model TLL44 Locate at front of hose bed. Switched with work light switch in cab.	1	
5390-0217	Crosslay light Optronics LED model TLL44. Locate to rear of crosslay (SM) and forward of crosslay (TM as applicable). Switched with work light switch in cab.	1	
LIGHTS - NON-WARNING			
5400-0003	Engine compartment light (EA).	1	
5400-0010	Incandescent pump compartment light (EA).	1	
5400-0031	Pair of Cab Dome Large Lights mounted driver and officer side front. N/A on E-One Chassis. Required on Comm Chassis.	1	
5400-0032	Pair of Cab Dome Large Lights mounted driver and officer side Rear. N/A on E-One Chassis or two door commercial chassis. Required on Comm Chassis.	1	
5400-0169	Pump panel LED light package for top mount. Includes (10) Tecniq EON lights with S/S housings located (3) ea side and (4) for top mount panel. Includes S/S light shields.	1	
MISC ELECTRICAL			
5110-0017	Back-up alarm 97 dB.	1	
LIGHTS - QUARTZ			
5450-0290-409	Light Whelen Pioneer model PFP1 12V with internal top raise pole mount. Includes switch accessible to driver. Location: driver side of pump module rearward of TM control panel.	1	
5450-0290-410	Light Whelen Pioneer model PFP1 12V with internal top raise pole mount. Includes switch accessible to driver. Location: officer side of pump module rearward of TM control panel.	1	
MISC LOOSE EQUIPMENT			
7900-0014	DOT Required Drive Away Kit - Kit includes three (3) triangular warning reflectors with carrying case. This kit is for the end user and is to remain with the truck.	1	
EXTERIOR PAINT			
8100-0089	All applicable pump/pre-connect application modules are to have a sanded finish (not painted job color). Includes upper and lower pump modules, crosswalk module and/or speedlay/pre-connect module (as applicable). Rear mounted body/pump module to be painted job color.	1	
8100-0116	Rear body surface to have a sanded finish (not painted job color). Includes hinged doors that do not have discrete sales codes and removable panels.	1	
8100-0182-000-17	Paint Body - Small - For Pumpers, Rear Mounts, S/A Tankers/Wetsides and	1	

Salescode	Extended Description	Qty	
EXTERIOR PAINT			
	Rescues. Sikkens paint. Color: FLNA3225E-1 Red.		
8100-0442-000-17	International cab paint (by chassis OEM). Paint to match FLNA3225E-1 Red.	1	
STRIPING			
8300-0001	NFPA required reflective striping to be dealer/customer applied.	1	
8300-0313	Yellow line to indicate designated standing / walking areas above 48" high in compliance with 2016 NFPA 1901. Line to be 1" wide. Steps, ladders and areas with a railing or structure at least 12" high are excluded from requiring the line.	1	
8300-0315-000-72	Chevron "A" style 6" printed sheet pattern NFPA Scotchlite striping. Includes driver and officer rear compartment face, smooth plate panels and/or doors outboard and above the center rear compartment opening. Does not include center rear compartment door. Colors to be Yellow/Red.	1	
WARRANTY / STANDARD & EXTENDED			
9100-0004	10 Year/100,000 Mile Structural Warranty for Alum Cab / Body - Statement of Warranty.	1	
9100-0005	10 Year Stainless Steel Plumbing Warranty - Statement of Warranty.	1	
9100-0019	10 Year Limited Paint and Perforation Warranty - For Sikkens Paint.	1	
9100-0039	1 year full warranty.	1	
SUPPORT, DELIVERY, INSPECTIONS AND MANUALS			
9300-0009	Manuals, Operator and Service CD-ROM.	1	
9300-0316	Fire Apparatus Safety Guide published by FAMA, latest edition.	1	
Dealer Supplied Equipment			